

# NIGERIA ELECTRICITY LIABILITY MANAGEMENT LIMITED/GTE



## SCHEDULE OF PROPERTIES

## PROPERTY INFORMATION

**LOT 4**

# No. 24/25 Marina Street, Lagos State.

LOT 4A



**Property Description:** A purpose built high-rise office complex on sixteen (16) Floor sitting on a land area of appr. 4,853m<sup>2</sup> occupied by Eko DisCo. ON LEASE

# Property at Familusi Avenue, Iyaganku, GRA, Ibadan

LOT 4B



**Property Description:** A 3-storey building of 6Nos. 3-bedroom flat with 6Nos Servant Quarters and a gate house sitting on a land area appr. 2,793.12m<sup>2</sup> **ON LEASE**

# Property at Flat 1, Block 17, Ladoke Akintola, GRA, Ikeja

LOT 4C

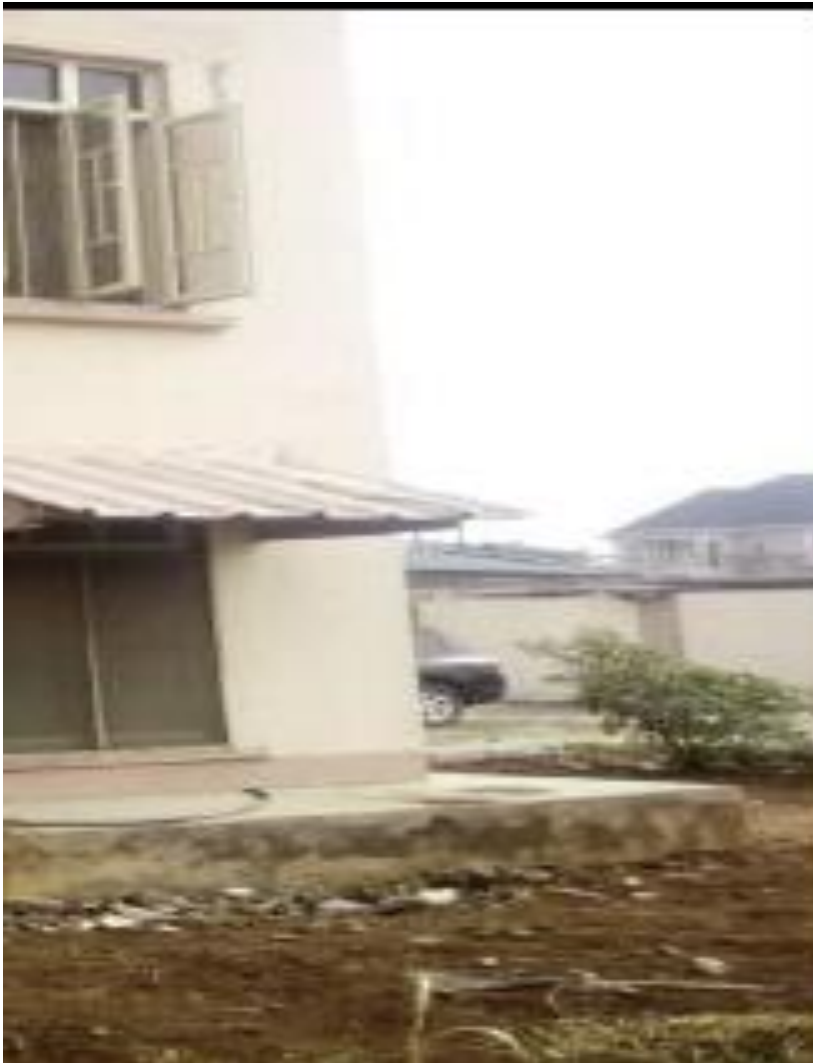


**Property Description:** A left wing, ground floor two bedroom Flat in a Block of 6 flats on three (3) floors.



# Property at Flat 1, Block 17, Ladoke Akintola, GRA, Ikeja

LOT 1D



**Property Description:** A right wing, ground floor two bedroom Flat in a Block of 6 flats on three (3) floors.

# No. 1 Atiku Abubakar Road, Jimeta Yola, Adamawa State

LOT 4E



**Property Description:** A 2 storey office complex sitting on a land area appr. 16,926m<sup>2</sup>. ON LEASE

# No. 2 Atiku Abubakar Road, Jimeta Yola, Adamawa State

LOT 4F



**Property Description:** A 3 storey office complex sitting on a land area appr. 10,323m<sup>2</sup>. **ON LEASE**

# NIGERIA ELECTRICITY LIABILITY MANAGEMENT LIMITED/GTE

## SCHEDULE OF PROPERTIES



# The End